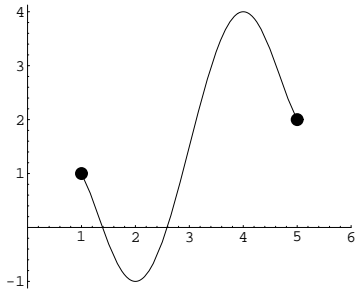


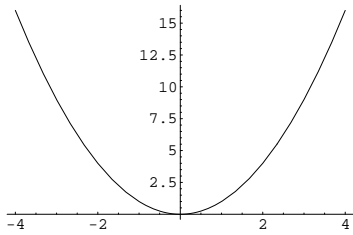
## Maximum and Minimum Values

For each of the following functions, identify all extrema (local and absolute) and extreme values.

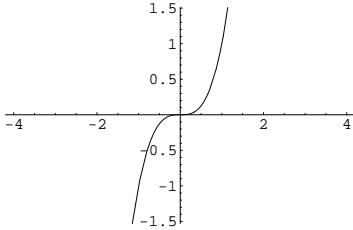
1. Domain =  $[1, 5]$



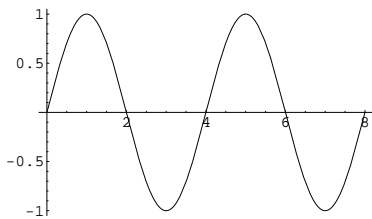
2.  $f(x) = x^2$ , Domain =  $(-\infty, \infty)$



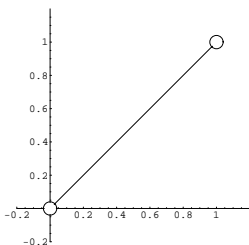
3.  $f(x) = x^3$ , Domain =  $(-\infty, \infty)$



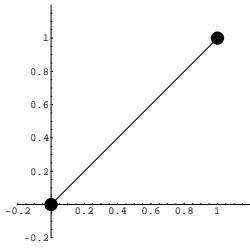
4. Domain =  $[0, 8]$



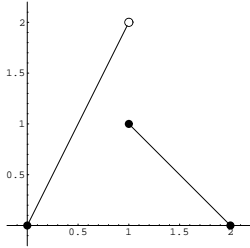
5. Domain =  $(0, 1)$



6. Domain =  $[0, 1]$



7. Domain =  $[0, 2]$



8. Domain =  $[1, 8)$

