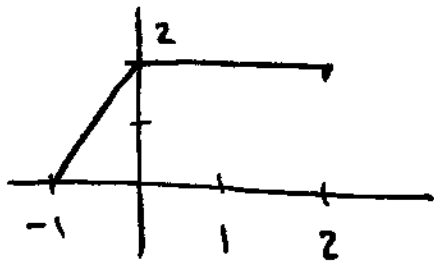


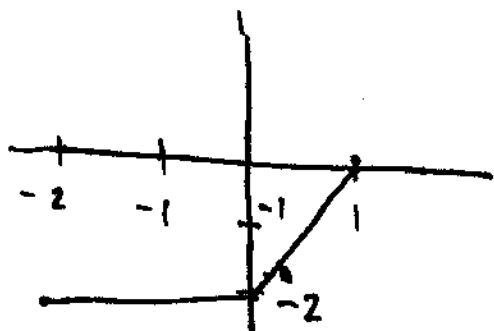
Section 1.4

2. $f(x)$:



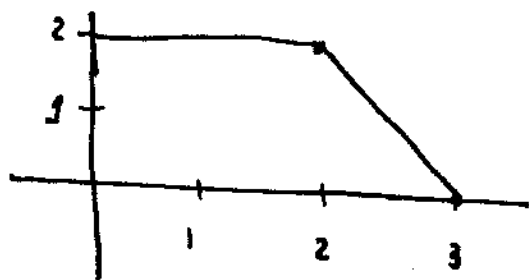
When dealing with functions like this, I first like to figure out the range, and graph specific values.

a) $-f(-x)$: $-1 \leq -x \leq 2 \Rightarrow -2 \leq x \leq 1$.



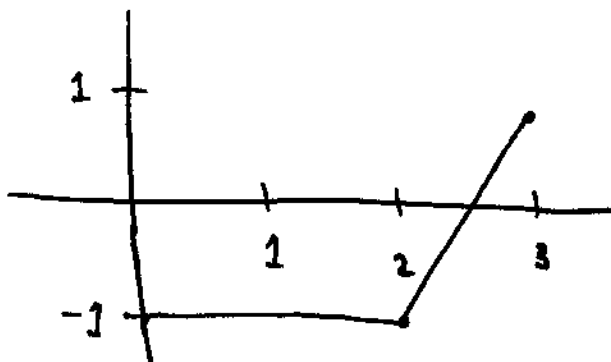
b) $f(2-x)$:

$$\begin{aligned} -1 &\leq 2-x \leq 2 \Rightarrow -3 \leq -x \leq 0 \\ &\Rightarrow 0 \leq x \leq 3. \end{aligned}$$



c) $1-f(2-x)$:

$$0 \leq x \leq 3$$



(d) $\frac{1}{2} f(2x)$:

$$-1 \leq 2x \leq 2$$

$$\Rightarrow -\frac{1}{2} \leq x \leq 1.$$

